

DataSafe® HX Top Terminated Batteries  
6 and 12 Volt



---

Battery Installation, Operation  
and Maintenance Instructions

---



Available exclusively from EnerSys®, the world leader in stored power solutions.

## Important

Please read this manual immediately upon receipt of battery before unpacking and installing. Failure to comply with these instructions will render any warranties null and void. The term battery within this literature pertains to (1) 12 Volt battery consisting of (6) individual cells or (1) 6 Volt battery consisting of (3) individual cells.

## Care for Your Safety



Dispose at registered waste handling facility



Battery must be recycled



Protect eyes from electrolyte



Read instructions



Do not charge in sealed container

### Handling

DataSafe® HX batteries are supplied in a fully charged state and must be unpacked carefully to avoid very high short-circuit currents between terminals of opposite polarity. Use care when handling and moving batteries. Appropriate lifting equipment must be used.

### Keep flames away

In case of accidental overcharge, a flammable gas can escape from the safety vent. Discharge any possible static electricity from clothes by touching an earth connected part.

### Tools

Use tools with insulated handles. Do not place or drop metal objects on the battery. Remove rings, wristwatches and any other articles of clothing with metal parts that may come into contact with the battery terminals.

### Other safety precautions that need to be taken



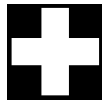
No smoking, no naked flames, no sparks



Danger



Electrolyte is corrosive



Clean all acid splash in eyes or on skin with plenty of clean water. Then seek medical help. Acid on clothing is to be washed with water.



Risk of explosion or fire. Avoid any short circuit. Metallic parts under voltage on the battery, do not place tools or items on top of the battery.

## Receiving the Shipment

Carefully examine the battery shipment upon arrival for any signs of transit damage and that it agrees with the materials list or packing slip. Be very careful not to inadvertently discard any accessories contained in the packing material. Batteries contain sulfuric acid in glass fiber separators.

Use rubber gloves when handling broken or damaged containers in case of acid leakage.

## Storage

Store DataSafe® HX batteries in a dry, clean and preferably cool location.

Since the batteries are supplied charged, storage time is limited. In order to easily charge the batteries after prolonged storage, it is advised not to store it more than:

- 6 months at ambient temperature no warmer than 77°F (25°C)
- 4 months at 86°F (30°C)
- 2 months at 104°F (40°C)

Give the battery a freshening charge before the end of the recommended storage interval.

A refreshing charge shall be performed at 2.26 Volts per cell (VPC) at 77°F (25°C) for 96 hours or until the charge current does not vary for a 3 hour period.

The necessity of a charge can also be determined by measuring the open circuit voltage of a stored battery.

Charging is advised if the voltage drops below 2.07 VPC.

Maximum total storage prior to installation is 2 years from date of shipment from the factory to the customer. Freshening charges are required before the end of the storage time period or more frequently, as noted above.

Failure to observe these conditions may result in greatly reduced capacity and service life.

### FAILURE TO CHARGE AS NOTED VOIDS THE BATTERY'S WARRANTY.

## Installation

Install in clean, dry area. DataSafe HX batteries release minimal amounts of gas during normal operation (gas recombination efficiency  $\geq 97\%$ ). The batteries can be installed near the main equipment. Batteries must be installed in accordance with federal, state and local law regulations and the manufacturer's instructions.

### ■ Temperature

Avoid placing batteries in areas of high temperature or in direct sunlight. The batteries will give their best performance and service life when operating at a temperature between 68°F (20°C) and 77°F (25°C), however they are capable of operating in a temperature range of -22°F (-30°C) to 122°F (50°C). Please reference the charging float voltage section for more information regarding float voltage adjustments for temperature variations. Reasonable precautions should be taken to prevent continuous operation below -22°F (-30°C) or above 122°F (50°C).

### ■ Ventilation

Under normal conditions gas release is very low and natural ventilation is sufficient for cooling purposes and inadvertent overcharge, enabling DataSafe HX batteries to be used safely in offices and with main equipment.

However, care must be taken to ensure adequate ventilation when placed in cabinets. Batteries must not be placed in sealed cabinets.

### ■ Stowing

For proper installation, EnerSys® battery racks and cabinets are recommended.

For rack installations, reference Assembly Instructions for DataSafe HX and HX Front Terminal UBC Battery Racks (US-HXRACK-IM).

For cabinet installations, reference DataSafe HX Battery Cabinet Systems Range Summary (US-HXCAB-RS).

If provided, intercell connector covers should be installed after completing the intercell connections.

**Attention:** Unless otherwise noted, battery racks and cabinets should not be transported with rigid intercell connectors in place.

### ■ Torque

The maximum torque load of intercell connector bolts (M6) is 6.8 to 10 N•m (60 to 88 in-lbs). A loose connector can cause problems in charger adjustment, erratic battery performance, possible damage to the battery and/or personal injury.

## Cells in Parallel Strings

When utilizing a constant voltage charger, ensure that the connections from the charger at the end of each string have the same electrical resistance.

To reduce the risk of current imbalance, the number of parallel strings in any system should be limited to five.

## Charging

### ■ Float Voltage

The float/charge voltage is 2.265 VPC at 77°F (25°C).

When the average ambient temperature deviates more than  $\pm 9^\circ\text{F}$  ( $5^\circ\text{C}$ ) from the reference, it is necessary to adjust the float voltage as follows:

2.33 to 2.36 VPC at 32°F (0°C)

2.30 to 2.33 VPC at 50°F (10°C)

2.27 to 2.30 VPC at 68°F (20°C)

2.25 to 2.28 VPC at 77°F (25°C) (reference)

2.23 to 2.26 VPC at 86°F (30°C)

2.22 to 2.25 VPC at 95°F (35°C)

Due to the phenomena of gas recombination, a difference of  $\pm 2\%$  (earlier in float life  $\pm 5\%$  is common) for an individual cell voltage can be observed. However, the total voltage of the battery shall be within the limits stated above.

### ■ Fast Recharge

Occasionally (4 or 5 times a year) the battery may be recharged at 2.40 VPC with a current limited to the values listed in the Table 1. This charging should not be allowed to continue for more than 16 hours.

### ■ Ripple Current

Unacceptable levels of ripple current from the charger or the load can cause permanent damage and a reduction in service life. It is recommended to limit the continuous ripple current to the values of the Table 1 (in amperes).

DataSafe® HX Battery Model	Maximum charging current (A)	Max recommended rms value of the alternating component (A)
12HX205	11.0	2.0
12HX300	18.0	3.5
12HX330	21.0	3.5
12HX400	24.0	4.2
12HX505	30.0	5.0
12HX540	31.0	5.0
6HX800	50.0	8.5

Table 1

### ■ Charging Current

The recommended charging method for DataSafe HX batteries is current limited, constant voltage charging. Refer to Table 1 for the current limits for each battery model.

### ■ State of Charge

The battery state of charge can be determined approximately by measuring the open circuit voltage after the battery has been at rest for a minimum of 24 hours at 77°F (25°C).

State of charge	Voltage
100%	2.12 to 2.14 VPC
80%	2.09 to 2.11 VPC
60%	2.05 to 2.08 VPC
40%	2.01 to 2.04 VPC
20%	1.97 to 2.00 VPC

Table 2

## Discharging

### ■ End of Discharge Voltage

The end of discharge voltage must be limited to 1.60 VPC.

A protecting system shall have to be installed to prevent deep discharge.

### ■ Discharged Cells

DataSafe® HX batteries must not be left in a discharged condition after supplying the load, but must be immediately returned to float recharge mode.

Failure to observe these conditions may result in greatly reduced service life and unreliability.

### ■ Accidental Deep Discharge

When the battery is completely discharged, the sulfuric acid is completely absorbed and the remaining electrolyte consists only of water.

At this point, the sulfation of the plates is at its maximum, considerably increasing the cell's internal resistance.

**Important notice:** This type of deep discharge will provoke a premature deterioration of the battery and a noticeable effect on life expectancy.

### ■ The Effect of Temperature on Capacity

Correction factor of the capacity, according to temperature.

Time of discharge	1 min to 60 mins
41°F (5°C)	0.84
50°F (10°C)	0.88
59°F (15°C)	0.93
68°F (20°C)	0.97
77°F (25°C)	1.00
86°F (30°C)	1.03
95°F (35°C)	1.05
104°F (40°C)	1.07

Table 3

## Maintenance and Records

DataSafe HX batteries are maintenance free, sealed, lead acid batteries and need no water addition. These batteries are equipped with self-resealing, flame-arresting safety vents.

The containers and lids shall be kept dry and free from dust. Cleaning must be done only with a damp cotton cloth. Check monthly that total voltage at battery terminals, while on float, is  $(N \times 2.24 \text{ to } 2.27 \text{ V})$  for a temperature of 77°F (25°C), (where N is the number of cells in the battery).

Every 12 months, read and record the following:

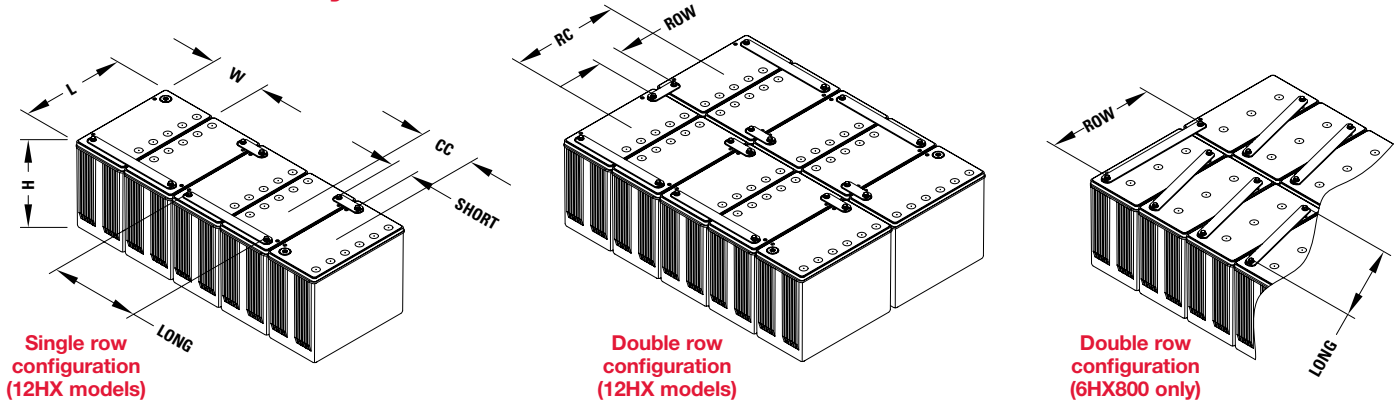
- Individual cell or battery voltages (in volts)
- Cell-to-cell connection resistance (in ohms)
- Terminal connection resistance (in ohms)
- Ambient temperature in the immediate battery environment

Keep a logbook to record values, power outages, discharge tests, etc.

An autonomy check can be carried out once or twice a year.

The above record taking is the absolute minimum to protect the warranty. This data will be required for any warranty claim made on the battery.

## Intercell Connector Layout



Note: End terminal position will depend upon number of units in row, ie. whether "ODD" or "EVEN" number.

DataSafe® HX Battery Model	Number of Cells	L		W		H		CC		RC		Short		Long		Row		Weight	
		In	mm	In	mm	In	mm	In	mm	In	mm	In	mm	In	mm	In	mm	Lbs	kg
12HX205	6	8.9	226	5.5	140	8.1	206	5.6	142	9.1	231	2.2	56	9.0	229	1.9	48	43	20
12HX300	6	10.2	259	6.9	175	8.2	208	6.9	175	10.3	262	2.7	69	11.2	284	2.2	56	60	27
12HX330	6	11.8	300	6.8	173	8.4	213	6.9	175	12.1	307	2.7	69	11.2	284	2.5	64	71	32
12HX400	6	13.3	338	6.8	173	8.3	211	6.9	175	13.4	340	2.7	69	11.2	284	3.0	76	80	36
12HX505	6	13.3	338	6.8	173	10.7	272	6.9	175	13.4	340	2.7	69	11.2	284	3.0	76	103	47
12HX540	6	13.3	338	6.8	173	10.7	272	6.9	175	13.4	340	2.7	69	11.2	284	3.0	76	106	48
6HX800	3	13.4	340	6.8	173	8.3	211	6.9	175	13.2	335	-	-	9.0	229	13.4	340	80	36

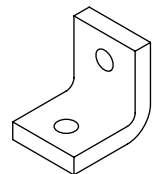
Batteries come standard with a stainless steel hardware package; p/n 867500 (one package per battery).

The hardware package includes (2) each M6x1 x 16mm long bolts, flat washers and lock washers.

Longer bolts are available but must be specified at the time of order placement.

## Optional Extras

DataSafe® HX Battery Model	SHORT			LONG			ROW			
	Connector*	Cover Black	Cover Clear	Connector*	Cover Black	Cover Clear	Connector*	Cover Black	Cover Clear	L-TERMINAL
12HX205	866881TP	HRD2328	827564	866885TP	HRD2329	827567	866880TP	HRD2328	827564	882044TP
12HX300	866883TP	HRD2327	827565	866886TP	HRD2330	827568	866881TP	HRD2328	827564	882044TP
12HX330	866883TP	HRD2327	827565	866886TP	HRD2330	827568	866882TP	HRD2327	827565	882043TP
12HX400	866883TP	HRD2327	827565	866886TP	HRD2330	827568	866884TP	HRD2327	827566	882043TP
12HX505	866883TP	HRD2327	827565	866886TP	HRD2330	827568	866884TP	HRD2327	827566	882042TP
12HX540	866883TP	HRD2327	827565	866886TP	HRD2330	827568	866884TP	HRD2327	827566	882042TP
6HX800	-	-	-	866887TP	HRD2329	827567	821940TP	-	827569	882042TP



L-Terminal for multiple cables

\* For run times under 15 minutes or end voltages less than 1.67, consult technical support for assistance.

Connectors and L-Terminals are RoHS compliant.



**EnerSys**  
2366 Bernville Road  
Reading, PA 19605  
USA  
Tel: +1-610-208-1991  
+1-800-538-3627

**EnerSys EMEA**  
EH Europe GmbH  
Löwenstrasse 32  
Zürich, Switzerland  
Tel: +41 (0) 44 215 74 10

**EnerSys Asia**  
152 Beach Road  
Gateway East Building #11-03  
Singapore 189721  
Tel: +65 6508 1780



© 2012 EnerSys. All rights reserved.  
Trademarks and logos are the property of EnerSys and its affiliates, unless otherwise noted.

www.enersys.com

Publication No. US-HX-IOM-004-September 2012  
Subject to revisions without prior notice. E.&O.E.